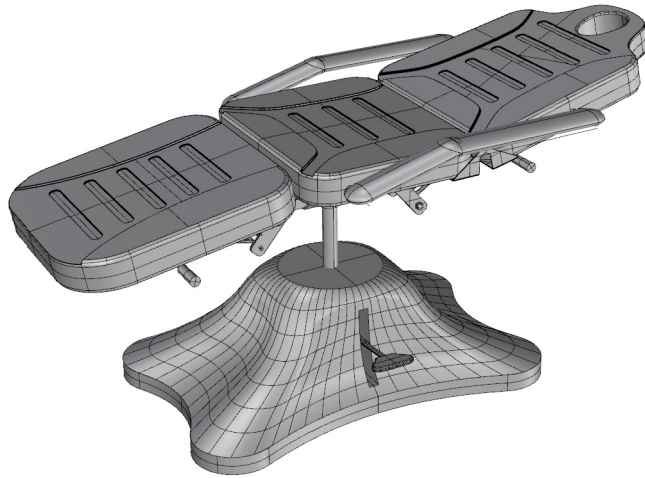
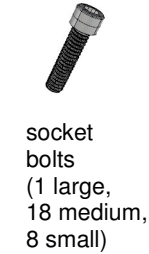


# Hydraulic Facial Bed Assembly Instructions



## Parts List



socket  
bolts  
(1 large,  
18 medium,  
8 small)



lockwashers  
(16 small,  
10 medium,  
6 large,  
1 xL)



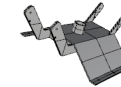
washers  
(16 small,  
12 medium,  
7 large)



flathead  
bolts  
(4 long,  
4 short)



2 handles,  
4 large  
dome nuts,  
2 small  
dome nuts



bottom  
bracket



4 springs  
4 hex nuts



hinges  
(2 flat,  
2 angled)

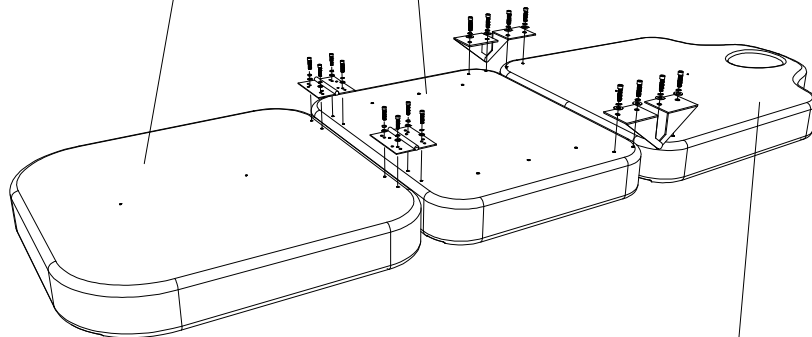


2 metal  
grooves  
and covers

(You should also have the three chair pieces, two arm rests  
the head cushion, and the large hydraulic base.)

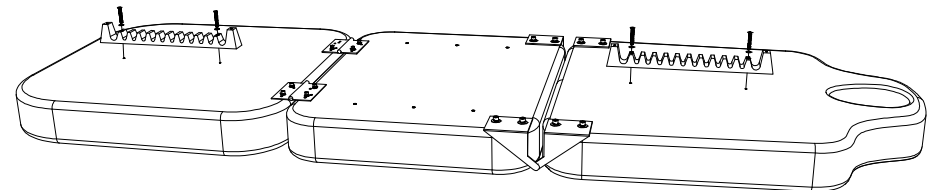
1. Connect the three bed pieces. Line them up like the picture above and flip them over.

Use 8 small bolts and 8 small washers and lock washers with the flat hinges to connect the **leg piece** to the **middle piece**.  
(These pieces may already be attached.)

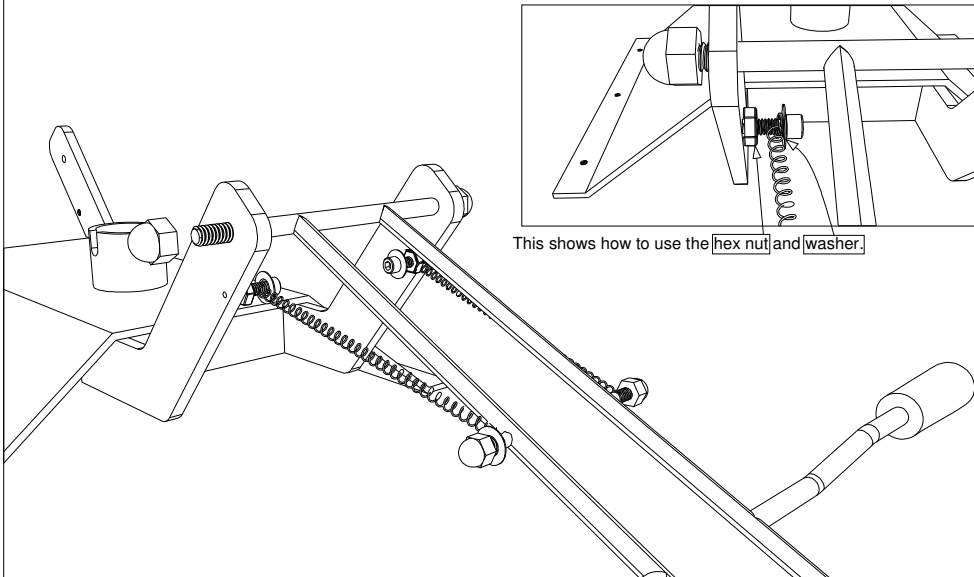


Use 8 medium bolts and 8 medium washers and lock washers with the angled hinges to connect the middle piece to the **head piece**.  
(These pieces may already be attached.)

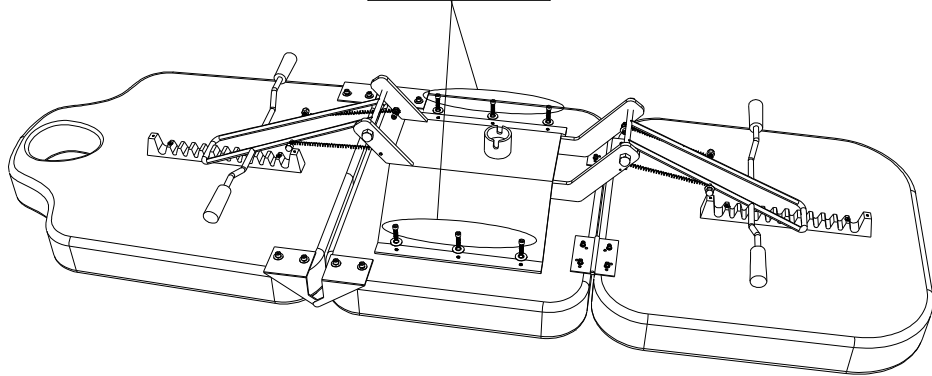
2. Attach the metal grooves using the 4 long flathead bolts and 4 small washers and lockwashers.



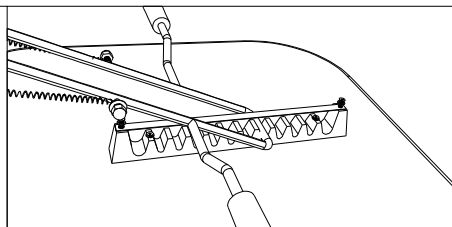
3. Attach the handles to the bottom bracket by sliding the threaded ends into the holes and capping them with the large dome nuts. Attach the springs using 1 small bolt, 1 hex nut, and 2 washers for each one.



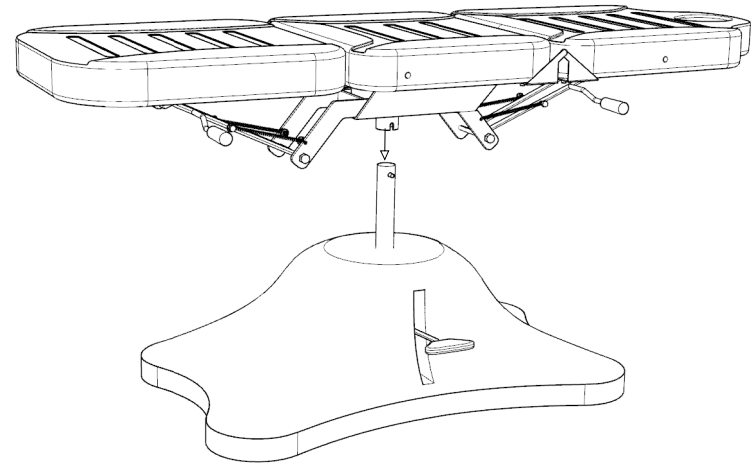
4. Bolt in the bottom bracket using six medium bolts and the six large washers/lockwashers.



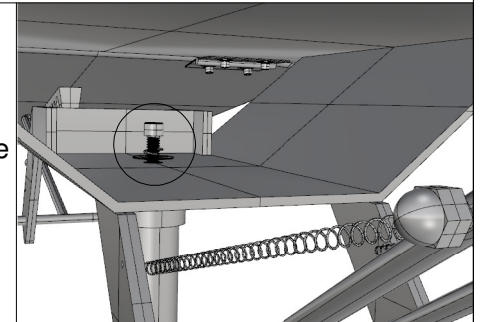
5. Put the adjustment bars in the metal grooves and attach the groove covers using the 4 short flathead bolts and 4 small washers and lockwashers.



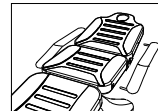
6. Attach the chair to the hydraulic base. This will require two able bodied people, and a third person can help to line it up.



7. Reach in the back and use the single xL bolt and lockwasher and the last large washer to secure the hydraulic.



8. Push in the arm rests.



Your facial bed is now complete.  
Enjoy!  
Thanks for choosing Minerva

### CAUTION!

Always assist your client when getting in and out of the facial bed. Ensure the hydraulic is in its lowest position and the chair top is locked, and remove the armrest for the safest and easiest entry & exiting of the bed.